

State of Wyoming Corner Record

(In compliance with the **CORNER PERPETUATION AND FILING ACT**, Wyoming Statutes, 1997 Section 33-29-140 et. seq., and the Rules and Regulations of the Board of Professional Engineers and Professional Land Surveyors)

Reverse side of this form may be used if more space is needed.

Record of original survey and citation of source of historical information (if corner is lost or obliterated). Description of corner monumentation evidence found and/or monument and accessories established to perpetuate the location of this corner. Sketch of relative location of monument, accessories, and reference points with course and distance to adjacent corner(s) (if determined in this survey). Method and rationale for reestablishment of lost or obliterated corner.

LOCATION: $\frac{1}{4}$ section corner common to Sections 5 and 8, T12N, R65W, 6th P.M., Laramie County, Wyoming.

EVIDENCE FOUND: Found 7"x4"x2" sandstone, " $\frac{1}{4}$ " on east side.

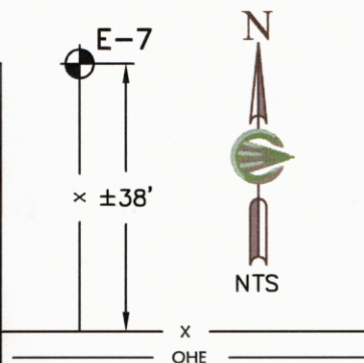
MONUMENT & ACCESSORIES ESTABLISHED: Nothing established.

LAT / LONG: 41°01'44.560"N, 104°41'05.264"W (NAD 83/CORS 96)

RECORDED 6/06/2011 AT 9:43 AM REC# 569923 BK# 2222 PG# 1339
DEBRA K. LATHROP, CLERK OF LARAMIE COUNTY, WY PAGE 1 OF 2

Location Detail

Monument Profile



Monument Inscription



GEODETIC POSITIONS ARE BASED ON A SINGLE GPS OBSERVATION (2 HR. SESSION) PROCESSED BY THE NGS OPUS. HORIZONTAL DATUM IS NAD83(CORS 96).

DISTANCES SHOWN HAVE BEEN MODIFIED TO GROUND BY A COMBINED FACTOR OF 1.0003295493.

Date of Field Work: 04/07/2011

Office Reference: 1715.19

Point #: 108

SEE REVERSE FOR CORNER TIES.

Cross Index Plat

1	2	3	4	5	6	7	8	9	10	11	12	13	14	15	16	17	18	19	20	21	22	23	24	25	
A																									A
B	+	+	+	+	+	+	+	+	+	+	+	+	+	+	+	+	+	+	+	+	+	+	+	+	B
C	+	6	+	+	5	+	+	4	+	+	3	+	+	2	+	+	1	+	+	+	+	+	+	+	C
D	+	+	+	+	+	+	+	+	+	+	+	+	+	+	+	+	+	+	+	+	+	+	+	+	D
E	+	+	+	+	+	+	+	+	+	+	+	+	+	+	+	+	+	+	+	+	+	+	+	+	E
F	+	+	+	+	+	+	+	+	+	+	+	+	+	+	+	+	+	+	+	+	+	+	+	+	F
G	+	7	+	+	8	+	+	9	+	+	10	+	+	11	+	+	12	+	+	+	+	+	+	+	G
H	+	+	+	+	+	+	+	+	+	+	+	+	+	+	+	+	+	+	+	+	+	+	+	+	H
J	+	+	+	+	+	+	+	+	+	+	+	+	+	+	+	+	+	+	+	+	+	+	+	+	J
K	+	+	+	+	+	+	+	+	+	+	+	+	+	+	+	+	+	+	+	+	+	+	+	+	K
L	+	18	+	+	17	+	+	16	+	+	15	+	+	14	+	+	13	+	+	+	+	+	+	+	L
M	+	+	+	+	+	+	+	+	+	+	+	+	+	+	+	+	+	+	+	+	+	+	+	+	M
N	+	+	+	+	+	+	+	+	+	+	+	+	+	+	+	+	+	+	+	+	+	+	+	+	N
O	+	+	+	+	+	+	+	+	+	+	+	+	+	+	+	+	+	+	+	+	+	+	+	+	O
P	+	19	+	+	20	+	+	21	+	+	22	+	+	23	+	+	24	+	+	+	+	+	+	+	P
Q	+	+	+	+	+	+	+	+	+	+	+	+	+	+	+	+	+	+	+	+	+	+	+	+	Q
R	+	+	+	+	+	+	+	+	+	+	+	+	+	+	+	+	+	+	+	+	+	+	+	+	R
S	+	+	+	+	+	+	+	+	+	+	+	+	+	+	+	+	+	+	+	+	+	+	+	+	S
T	+	30	+	+	29	+	+	28	+	+	27	+	+	26	+	+	25	+	+	+	+	+	+	+	T
U	+	+	+	+	+	+	+	+	+	+	+	+	+	+	+	+	+	+	+	+	+	+	+	+	U
V	+	+	+	+	+	+	+	+	+	+	+	+	+	+	+	+	+	+	+	+	+	+	+	+	V
W	+	+	+	+	+	+	+	+	+	+	+	+	+	+	+	+	+	+	+	+	+	+	+	+	W
X	+	31	+	+	32	+	+	33	+	+	34	+	+	35	+	+	36	+	+	+	+	+	+	+	X
Y	+	+	+	+	+	+	+	+	+	+	+	+	+	+	+	+	+	+	+	+	+	+	+	+	Y
Z	+	+	+	+	+	+	+	+	+	+	+	+	+	+	+	+	+	+	+	+	+	+	+	+	Z
1	2	3	4	5	6	7	8	9	10	11	12	13	14	15	16	17	18	19	20	21	22	23	24	25	

Corner Name North 1/4 Corner Section 8, T 12 N, R 65 W, 6th P.M.

County: Laramie Wyoming

SBRPEPLS/PLSW: March 1994; PLSW January 1998

Cross-Index No.: E-7

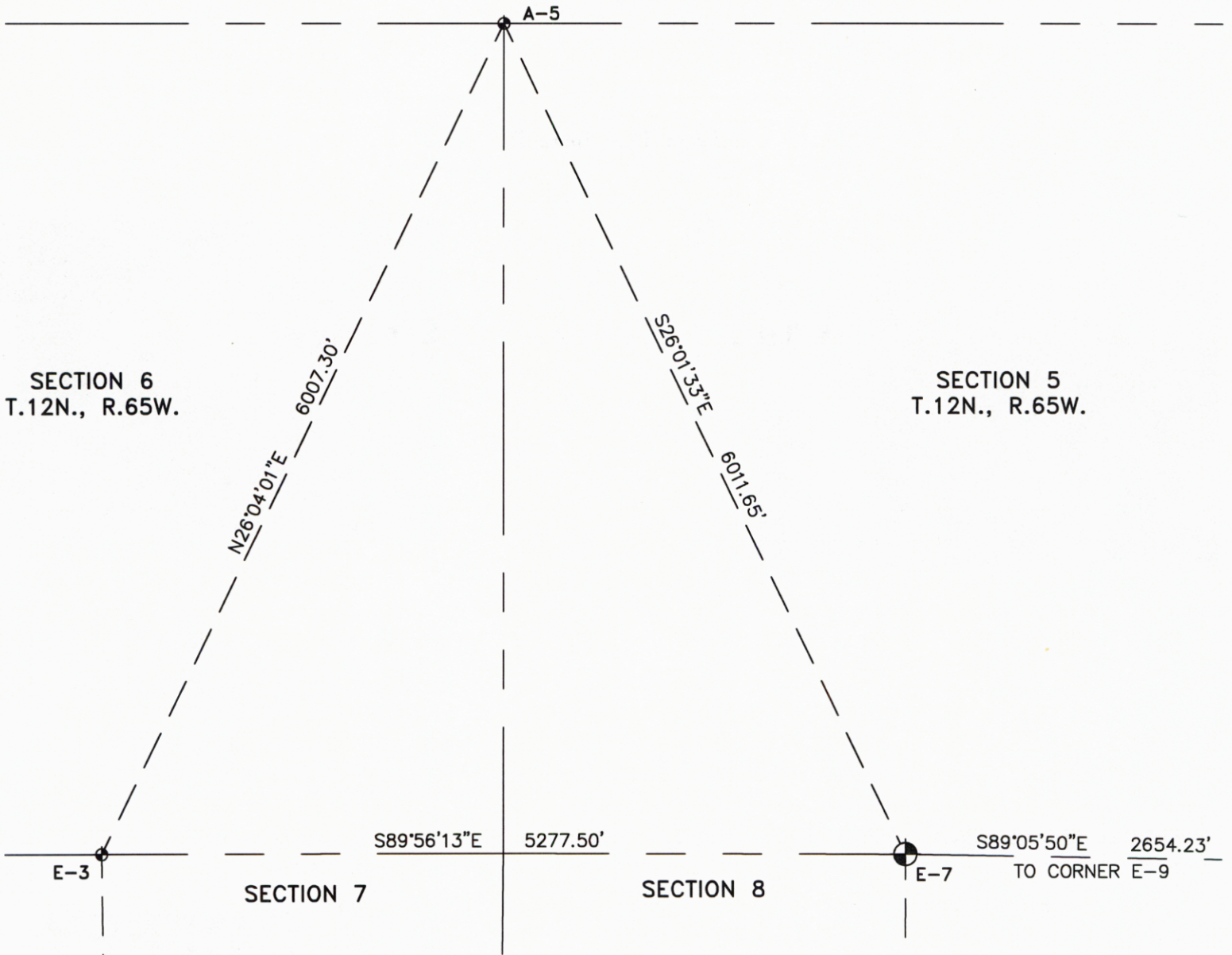
COFFEY
ENGINEERING & SURVEYING
902 S. 3rd St., Laramie, WY 82070
[P] 307-742-7425 [F] 307-742-7403


This corner record was prepared by me or under my direction and supervision.

SEAL & SIGNATURE



Monument Location



SCALE: 1 IN = 1000 FT

 0' 500' 1000'

NOTES:

DISTANCES SHOWN HAVE BEEN MODIFIED TO GROUND BY A COMBINED FACTOR OF 1.0003295493.

 FOUND PLSS MONUMENT

 REFERENCED FOUND PLSS MONUMENT